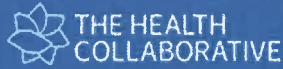




SW Ohio | N Kentucky | SE Indiana

CHNA

Community Health Needs Assessment



2019 Report

The Collaborative Report serves:

- ✓ **35** Hospitals
- ✓ **25** Counties
- ✓ **28** Local Health Departments
- ✓ **3** States

Hospitals

The Christ Hospital Health Network
Cincinnati Children's Hospital Medical Center
Clinton Memorial Hospital
Highpoint Health
Kettering Health Network
Fort Hamilton Hospital
Grandview Medical Center
Greene Memorial Hospital
Kettering Behavioral Medic Center
Kettering Medical Center
Soin Medical Center
Southview Medical Center
Sycamore Medical Center
Lindner Center of HOPE
Mercy Health | Cincinnati Region
Mercy Health - Anderson Hospital
Mercy Health - Clermont Hospital
Mercy Health - Fairfield Hospital
Mercy Health - West Hospital
The Jewish Hospital – Mercy Health

Mercy Health | Springfield Region
Mercy Health - Urbana Hospital
Springfield Regional Medical Center
Premier Health
Atrium Medical Center
Miami Valley Hospital
Miami Valley Hospital North
Miami Valley Hospital South
Upper Valley Medical Center
Tri-Health
Bethesda Butler Hospital
Bethesda North Hospital
Good Samaritan Hospital
McCullough Hyde Memorial Hospital
Tri-Health Evendale Hospital
UC Health
Daniel Drake Center for Post-Acute Care
University of Cincinnati Medical Center
West Chester Hospital
Wayne HealthCare
Wilson Health

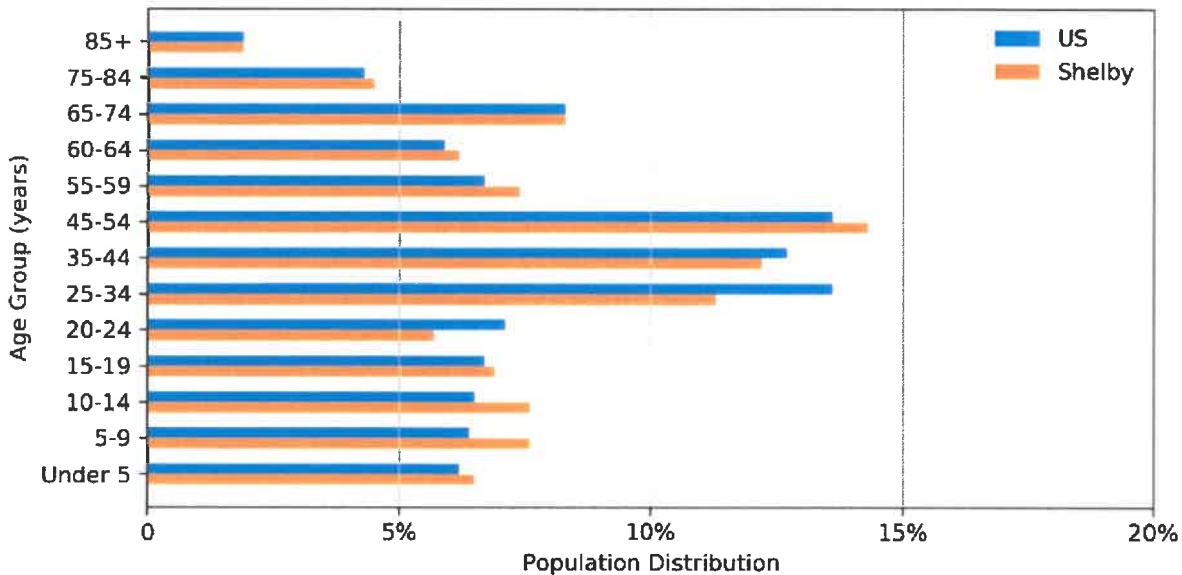
SHELBY COUNTY, OHIO

The county seat is Sidney. Rates of breast, lung and overall cancer are higher than the Ohio and U.S. averages. There are fewer primary care, mental health and dental health providers than the Ohio and U.S. average ratios.

Population Chart

The following is a population chart for Shelby county from years 2012-2016.

FIGURE 49. SHELBY COUNTY POPULATION



Consensus on Priorities

Substance abuse was mentioned as a top priority by all four response groups. Respondents from the community meeting and health department specifically referred to the opioid crisis. Access to care was a priority mentioned at the community meeting, in the agency surveys, and from the health department. Additionally, mental health was conveyed as a priority at the community meeting and in the agency surveys. Chronic disease was also mentioned as a priority in the consumer and agency surveys.

Top Causes of Death

The top causes of death for Shelby County in 2016 were, in descending order:

- Lung cancer
- Atherosclerotic heart disease

Priorities from Community Meeting on April 24, 2018

The fourteen attendees represented a diverse group of community agencies and local government. A total of 37 priorities were mentioned. The following table contains the issues that received more than 5% of all mentions.

TABLE 116. SHELBY COUNTY: MEETING PRIORITIES

Priority	# Votes	% Votes
Access to care	8	21.6%
Health education/Promotion	7	18.9%
Substance abuse (<i>Opioid addiction mentioned 4 times</i>)	7	18.9%
Mental health	6	16.2%
Dental	3	8.1%
Healthy food/Nutrition	2	5.4%
Funding	2	5.4%

Survey Priorities

Below are the most common responses from individual consumers, living in Shelby County, who completed a survey between 6/19/18 and 8/3/18. There were 3 people who participated, and they all answered the question, “Given the health issues facing the community, which ones would be your top priorities?” They mentioned 2 health and/or health-related issues of particular concern. The following table contains the issues that received more than 5% of all mentions.

“People suffering from mental illness don’t always know how to advocate for themselves or have family who can advocate for them.”

- Shelby County resident

TABLE 117. SHELBY COUNTY: CONSUMER PRIORITIES

Priority	# Votes	% Votes
Chronic disease (<i>especially Obesity</i>)	1	50%
Substance abuse	1	50%

Ten organizations, serving Shelby County, responded with their priorities. The priorities that received more than 5% of mentions are listed below.

TABLE 118. SHELBY COUNTY: AGENCY PRIORITIES

Priority	# Votes	% Votes
Substance abuse	5	26%
Access to care	3	16%
Chronic disease	2	11%
Mental health	2	11%
Social Determinants of Health	2	11%
Physical activity	2	11%

Response from Health Department

The Sidney-Shelby County Health Department provided its health priorities for the community:

- Opioid crisis
- Affordable/available health care

Shelby County Health Snapshot

Population: 48

Measure/Indicator	County	Trend	State	U.S.
Health Outcomes				
Cancer mortality, Breast (rate per 1,000)	24.0	*	22.4	20.2
Cancer mortality, Lung (rate per 1,000)	55.3	*	49.6	39.4
Cancer mortality, Overall (rate per 1,000)	185.1	↑*	174.3	157.1
Childhood asthma (%)	10.6		11.0	8.4
Chronic Lower Respiratory Disease (CLRD) deaths age 65 and up (rate per 100,000)	313.1	↑	316.1	270.9
Diabetes (%)	11.0	—	11.1	10.7
Heart Disease Deaths (rate per 100,000)	188.2	—	188.4	167.0
Infant Mortality (rate per 1,000 live births)	5.0	—	7.2	5.9
Injury Deaths (rate per 100,000)	58.0	↑	61.2	45.3
Low birthweight (%)	6.0	—	8.5	8.2
Preterm Birth (%)	8.4	—	10.3	9.6
Poor physical health days (last 30 days)	3.4	—	4.0	3.9
Poor mental health days (last 30 days)	3.7	—	4.0	3.7
Stroke Deaths (rate per 100,000)	38.0	↓	40.6	37.5
Health Behaviors				
Adult Obesity (%)	32.0	-*	30.6	29.2
Adult Smoking (%)	18.0	↓	22.0	16.5
Alcohol-impaired driving deaths (%)	44.0	↑*	34.0	30.0
Chlamydia incidence (rate per 100,000)	302.3	↑	521.6	497.3
Excessive drinking (%)	19.0	—	18.1	16.6
HIV prevalence (rate per 100,000)	72.0	↑	199.5	305.2
Motor vehicle crash deaths (rate per 100,000)	12.0	*	10.3	11.5
Physical inactivity (%)	24.0	—	26.4	25.2
Substance Abuse/Mental Health				
Depression (%)	15.8	—	18.5	17.1
Drug overdose mortality rate (per 100,000)	20.0	↑	26.2	17.0
Suicide (rate per 100,000)	8.6	—	13.3	13.4
Access to Care				
Dentists (ratio)	4050:1	↑*	1656:1	1480:1
Mammography screening (%)	54.0	—	73.7	72.7
Mental health providers (ratio)	1520:1	↓*	561:1	470:1
Primary care physicians (ratio)	2570:1	↑*	1307:1	1320:1
Uninsured (%)	6.0	↓	8.0	11.0
Socio-Economic/Demographic				
Children in poverty (%)	14.0	↑	22.1	21.2
African American (%)	2.1		12.1	12.4
Population that is 65 and older (%)	15.6	↑	14.5	16.0
Population below 18 years of age (%)	25.5	—	23.0	22.3

Top Causes of Death

Lung Cancer
Heart Disease

Alcohol-Impaired Driving Deaths

Increasing and > than OH & US

STDs

HIV prevalence and Chlamydia incidence increasing but < than OH & US

Dentists

Fewer than half the dentists per population for OH or US

Children in Poverty

Rate < OH and US but increasing

Source data range: 2014-2017

*=higher than state and national rates or %

Community Need Index

A high CNI score (3.4 to 5.0) is an indicator for socioeconomic variation, barriers to care, and an increased need for health care services. None of the County's Zip Codes exceeds a 3 score.

