

Sidney-Shelby County  
Health Department

2024  
Annual Report



**Public Health**  
Prevent. Promote. Protect.

Sidney-Shelby County  
Health Department

# Health Commissioner's Report



Dear Community Members,

I am honored to present the 2024 Annual Report for the Sidney-Shelby County Health Department. This report reflects the unwavering dedication of our staff, community partners, and volunteers, whose efforts have been instrumental in addressing the health challenges and promoting wellness across our community.

This past year has been a time of both resilience and progress. Together, we have worked to ensure access to essential health services, expand preventative care, and support programs that address mental health, chronic diseases, environmental health, and infectious disease prevention. These efforts are more than just initiatives; they represent our commitment to fostering a healthy and equitable environment for all.

Our team has focused on innovative solutions to meet the diverse needs of our community, from expanding digital health services to creating more outreach programs for vulnerable populations. Key achievements highlighted in this report include:

1. **Public Health Preparedness:** Strengthening our response capabilities and ensuring readiness for future public health challenges.
2. **Health Equity Initiatives:** Launching programs that address disparities in healthcare access and outcomes.
3. **Community Engagement:** Partnering with community organizations to deliver services and health education that resonate with the unique needs of our residents.

None of this would be possible without the dedicated professionals, community partners, and volunteers who continue to support our mission. As we look ahead, we remain committed to advancing our public health goals with integrity, transparency, and compassion.

Thank you for your trust and support. Together, we are building a healthier future.

Sincerely,

Erica Lentz  
Health Commissioner



# 2024 Board of Health

Aaron M. Sargeant, DVM, PhD.....President  
Matthew Scott Vasko, MD.....Vice President (not pictured)  
Bill Ankney  
Ted Holthaus, MBA, PAS  
Shelby Pence, RN



# 2024 Employees

Karin Bok, Laura Booth, Kimberly DeLoye, Carol Dircksen,  
Eileen Ferree, Tami Folk, Julianne Geise, Antoinette Gibson,  
Teri Heath, Rhonda Gump, Kristen Heitman, Benjamin Hickerson,  
Kathy Hines, Stephanie Holthaus, Mary Hormann, Erica Lentz,  
Roberta Mangen, Michael McClain, Shannon Nagel,  
Jannel O'Leary, Ashley Russell, James Schwepe, Jay Stammen  
Tia Toner, Kent Topp, Ted Wuebker, Kelly York

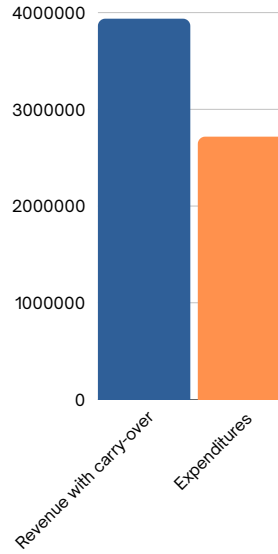
# Medical Director

Paul W. Weber, MD



# Financial Summary 2024

**2024 Revenue**  
 \$2,993,823.16  
**2023 Carry-Over Balance**  
 \$943,431.22  
**Total Operating Revenue**  
 \$3,937,254.38  
**2024 Expenditures**  
 \$2,717,540.17  
**Difference**  
 \$1,219,714.21

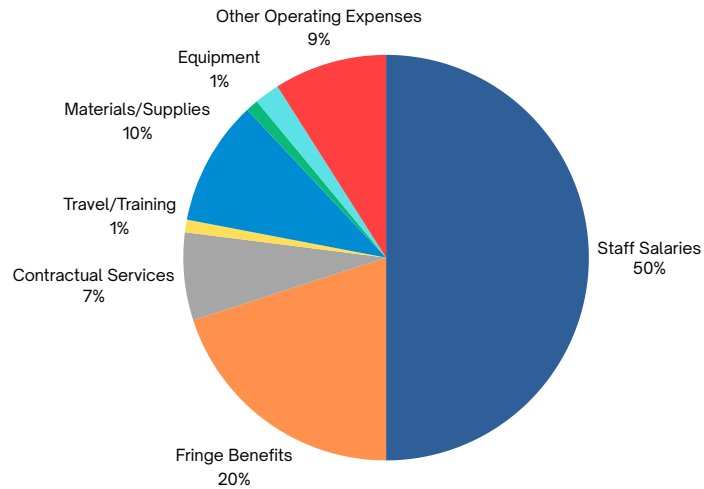


The chart to the left shows Sidney-Shelby County Health Department's revenue and expenses for the period which ended December 31, 2024. A detailed copy of the annual financial statement is available by contacting Kim DeLoye at 937-498-7249 or Kimberly.DeLoye@shelbycountyhealthdept.org

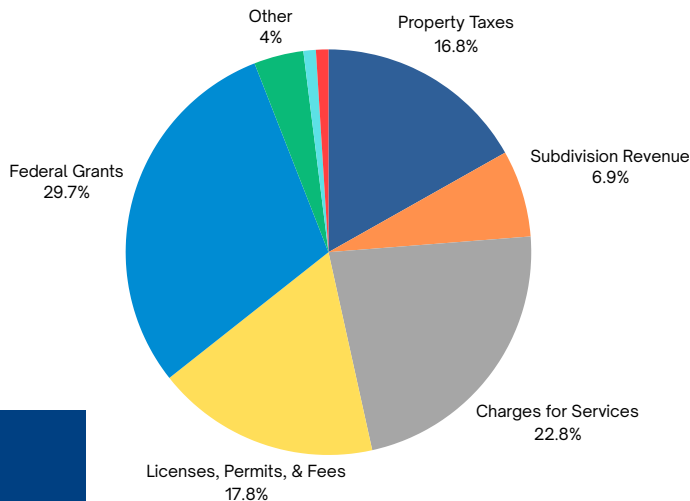
## 2024 Expenses

Staff Salaries	\$ 1,349,667.74
Fringe Benefits	\$ 545,605.91
Contractual Services	\$ 173,951.67
Travel/Training	\$ 35,478.17
Materials/Supplies	\$ 274,511.63
Equipment	\$ 36,702.00
State Remittance Fees	\$ 65,194.90
Other Operating Expenses	\$ 236,427.15

## 2024 Expenses



## 2024 Revenue



## 2024 Revenue

Property Taxes	\$ 513,930.16
Subdivision Revenue	\$ 200,000.00
Charges for Services	\$ 686,572.40
Licenses, Permits, and Fees	\$ 546,105.60
Federal Grants	\$ 891,471.41
Other	\$ 112,922.79
Local Funding	\$ 19,805.00
Miscellaneous	\$ 23,015.80

# Accreditation News and Updates



The Sidney-Shelby County Health Department (SSCHD), as part of the reaccreditation process, is committed to aligning its operations with standards set by the Public Health Accreditation Board (PHAB). The standards and process for reaccreditation are designed to encourage accredited health departments to continue to evolve, improve, and advance, thereby becoming increasingly effective at improving the health of the population they serve.

In 2022, SSCHD received accreditation, a recognition that reflects the department's commitment to improving health services. To maintain this status, SSCHD is required to submit an annual report to PHAB. This report validates that SSCHD continues to meet the high standards for quality, effectiveness, and accountability.

In 2024, SSCHD submitted its first accreditation annual report aligning with the latest version of PHAB's standards and measures. As part of its ongoing efforts, SSCHD is working on updating our Strategic Plan and Community Health Needs Assessment. Additionally, we are tracking our performance management efforts through a dashboard, which will provide valuable insights into its progress. Quality improvement projects are also being implemented to improve operational efficiency and customer service. These measures demonstrate SSCHD's commitment to continuous improvement, ensuring that we remain a high-performing health department dedicated to the well-being of the population we serve.

## Medical Reserve Corps (MRC)

The Medical Reserve Corps (MRC) is a national network of volunteers, organized locally to improve the health and safety of their communities.

In 2024, the Sidney-Shelby County Health Department (SSCHD) received a significant boost in their efforts to enhance emergency preparedness and MRC operations through a \$289,913 MRC STTRONG grant. A total of \$140,000 of the grant will be shared across seven other counties within the WCO Region. This funding is aimed at improving the emergency preparedness capabilities of the units and promoting the MRC units.

This award has allowed SSCHD to provide training opportunities for our MRC Volunteers in areas such as Life Saving Skills (CPR, Stop the Bleed & Narcan administration), Extreme Weather Training, and Access and Functional Needs training.

For more information, or to register to be part of the MRC contact: [roberta.mangen@shelbycountyhealthdept.org](mailto:roberta.mangen@shelbycountyhealthdept.org)



# Emergency Preparedness

The SSCHD Public Health Emergency Preparedness Program (PHEP) helps prepare SSCHD employees, volunteers, and the community to respond to public health emergencies and natural disasters. This program involves writing response plans, training on the plans, gathering the necessary equipment and supplies to respond, testing the plans through exercises and drills, and preparing after action reports based on the exercises or real world events. This program is funded through a grant provided by the Ohio Department of Health.

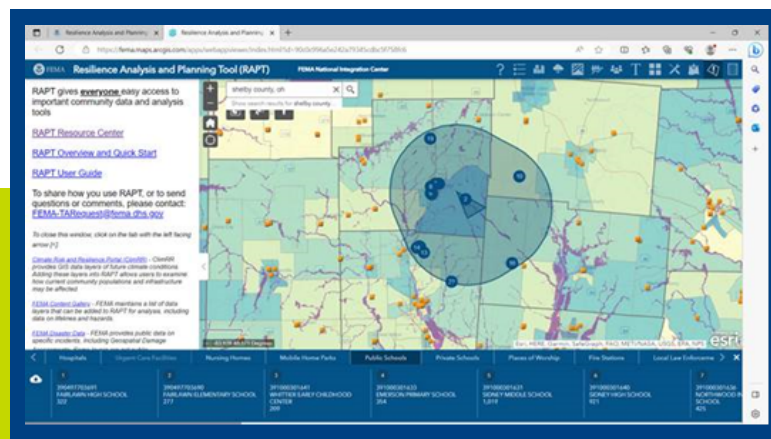
The SSCHD PHEP program participated with our community partners in planning for the solar eclipse that occurred on April 8, 2024. The event was a great opportunity for preparedness training within our community. It was the first time the Shelby County Emergency Operations Center (EOC) was open. SSCHD staff that participated in EOC operations included Erica Lentz, Tia Toner, Roberta Mangen, and Eileen Ferree.

SSCHD staff developed many flyers and educational materials for our community regarding the event, and provided information on where people could obtain solar eclipse glasses. Luckily, the Shelby County Community had great weather for the total solar eclipse, which made viewing the eclipse a spectacular experience.



## Whole Community Planning – RAPT Data Tool

The Federal Emergency Management Agency’s (FEMA) Resilience Analysis and Planning Tool (RAPT) gives emergency managers key data about their community, including population characteristics, infrastructure locations, and potential hazards. Understanding these elements of a community can lead to better preparedness, mitigation, and response strategies. The SSCHD learned how to use this tool as part of the PHEP grant requirements. Below is a map that was generated from this tool based upon a hypothetical emergency response scenario:



# Vital Statistics

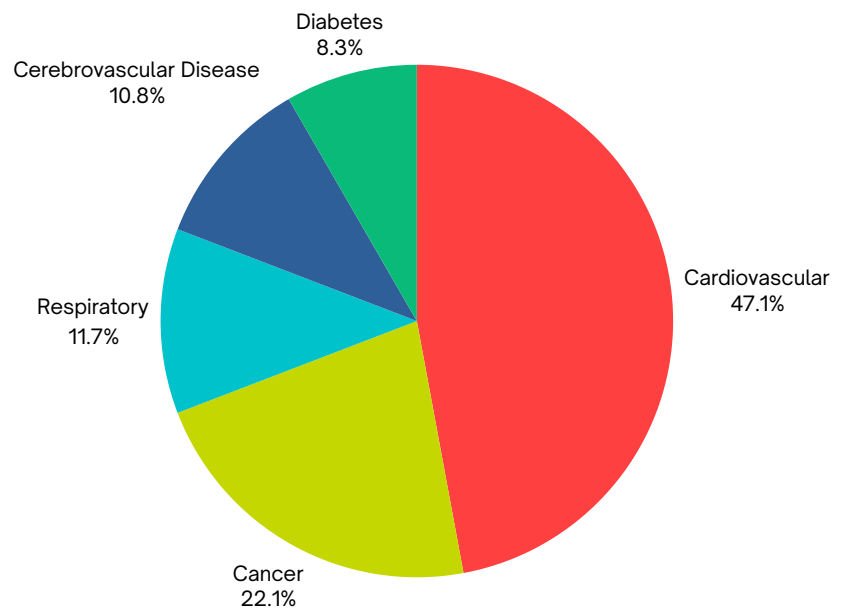
Birth and death records in Ohio date back to December 1908 and are maintained by local health departments using a statewide database. These records are issued on secure paper and can be obtained for legal purposes, such as social security numbers, driver's licenses, insurance claims, and changes to social security benefits. They are also valuable for genealogy research and epidemiological studies. Certificates can be requested in person, by mail, online, or by phone with credit card payment.



## Births

Births recorded in Shelby County	789
Hospital	773
Out of Institution	16
Males	388
Females	401
Sets of Twins	3
Oldest Mother	44
Youngest Mother	14
Birth Certificates Issued	2198

## 2024 Top Five Leading Causes of Death in Shelby County



## Deaths

Deaths Recorded in Shelby County	352
Males	165
Females	187
Death Certificates Issued	1406
Burial Permits Issued	410

# Public Health Nursing

Public health nursing strives to preserve the health of populations by focusing on health promotion and disease prevention and protection. The programs and services offered help improve the health of our community by linking people to services and education.

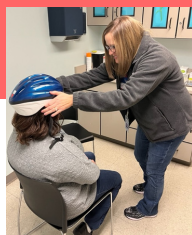


## 2024 Top 5 Reportable Communicable Diseases

- COVID-19 214
- Chlamydia 96
- Pertussis 11
- Gonorrhea 10
- HEP C 9



Immunizations are available by appointments and evening clinics are held every 1st and 3rd Wednesday of the month from 4:00 PM to 6:00 PM. International travel consultation and vaccinations are available by appointment.



## Public Health Nursing By the Numbers

Help Me Grow Case Load	25
Home Visits	423
Average Children on CMH	541
Communicable Diseases reported and investigated	386
Total Mantoux TB Tests Administered & Read	183
Childhood Immunizations Given	1510
Adult Immunizations Given	1266
International Travel/Adult	46
Car Seats Distributed	129
Bike Helmets Distributed	129
Cribs Distributed	89
WIC Average Monthly Participant Rate	440



# Environmental Health



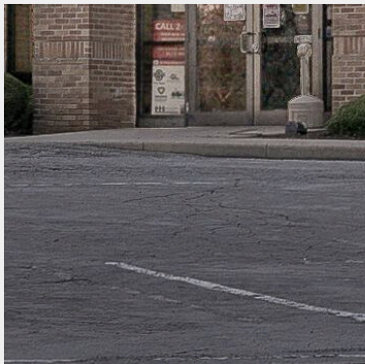
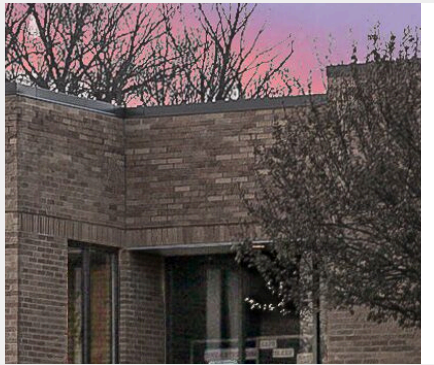
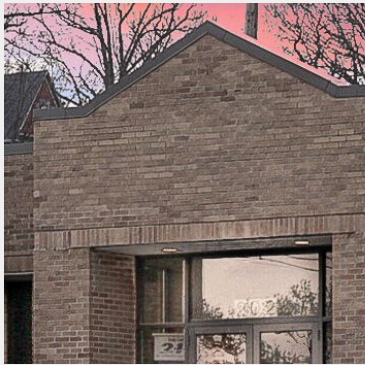
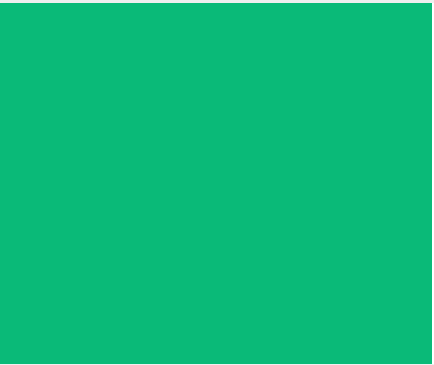
## Public Health Environmental By the Numbers

	Number	Inspections	Consultations
Subdivision Survey/Lots	32	12	70
Household Sewage Disposal	22	80	78
Aeration/Operational Permits	1294	1068	339
HSTS Service Contractors Registered	9	9	32
Sewage System Installers Registered	21	21	89
Septage Haulers	15	15	23
Nuisance/Housing Complaints	33	40	414
Animal Bites-Dogs/Cats	89		
Animal Bites- Other (wild)	4		
Animals Tested for Rabies	6		
Animals Tested Positive	0		
Food Service/Retail Food Establishments	304	630	293
Vending Locations	13	18	4
Temporary Food	100	100	66
Mobile Food	19	24	93
Facility Reviews	30		
Body Art/Tattoo and Body Piercing Establishments	10	10	8
Manufactured Home Parks	11	16	7
RV Park Camps	7	14	24
Temporary Camps	12	12	28
Resident Camp	1	1	1
New Well Permits	32	48	256
Alteration Permits	8	8	21
Water Samples Tested	84	39	162
Sealing Permits	7	7	25
Schools and Correctional Facilities	21	40	23
Plumbing Contractors Registered	104		
Residential/Commercial Permits Issued	224		
Solid & Infectious Waste Facilities	14	16	30
Compost Facilities	3	3	10
Public Swimming Pools/Spas	21	45	57
Smoking Complaints	5	2	5



The Environmental Health (EH) Division works to improve and protect public health in Shelby County with many programs. The EH Division inspects food operations, household sewage treatment systems, nuisance/housing complaints, private water systems, body art establishments, schools, correctional facilities, campgrounds, manufactured home parks, solid waste facilities, and other EH related sites. The EH Division also administers several other programs that directly impact community health like rabies, mosquito control, plumbing, and the smoke-free workplace program.





**Public Health**  
Prevent. Promote. Protect.

---

**Sidney-Shelby County  
Health Department**