

Sidney-Shelby County Health Department

2025 Annual Report



Public Health
Prevent. Promote. Protect.

Sidney-Shelby County
Health Department

Health Commissioner's Report



This year, the Sidney–Shelby County Health Department advanced its mission to protect and improve community health through prevention, collaboration, and service. Our staff delivered essential programs, expanded outreach, and responded to emerging needs across Shelby County.

A key accomplishment was the adoption of a new Strategic Plan to guide priorities and ensure responsiveness to community needs. In 2025, the Environmental Health Division received the OEPA WPCLF HSTS grant to assist homeowners with failing sewage systems and partnered with township trustees for the annual Solid Waste Clean-Up Day. The Nursing Division added Family Connects Ohio, a no-cost newborn home-visiting program for all new families. Barney Boxes were placed throughout the community, and a harm reduction vending machine was installed at the health department to expand access to critical resources.

This work was made possible by dedicated staff, strong leadership, and continued community support as we build a healthier future together.

Sincerely,

Erica Lentz
Health Commissioner

2025 Board of Health



Aaron M. Sargeant, DVM, PhD.....President
Matthew Scott Vasko, MD.....Vice President (not pictured)
Bill Ankney
Ted Holthaus, MBA, PAS
Shelby Pence, BSN, RN

Medical Director



Paul W. Weber, MD

2025 Employees

Karin Bok, Laura Booth, Kimberly DeLoye, Carol Dircksen, Eileen Ferree, Tami Folk, Julianne Geise, Antoinette Gibson, Teri Heath, Rhonda Gump, Kristen Heitman, Benjamin Hickerson, Kathy Hines, Stephanie Holthaus, Mary Hormann, Erica Lentz, Roberta Mangen, Michael McClain, Shannon Nagel, Jannel O'Leary, Ashley Russell, James Schwepe, Jay Stammen, Tia Toner, Kent Topp, Ted Wuebker, Kelly York

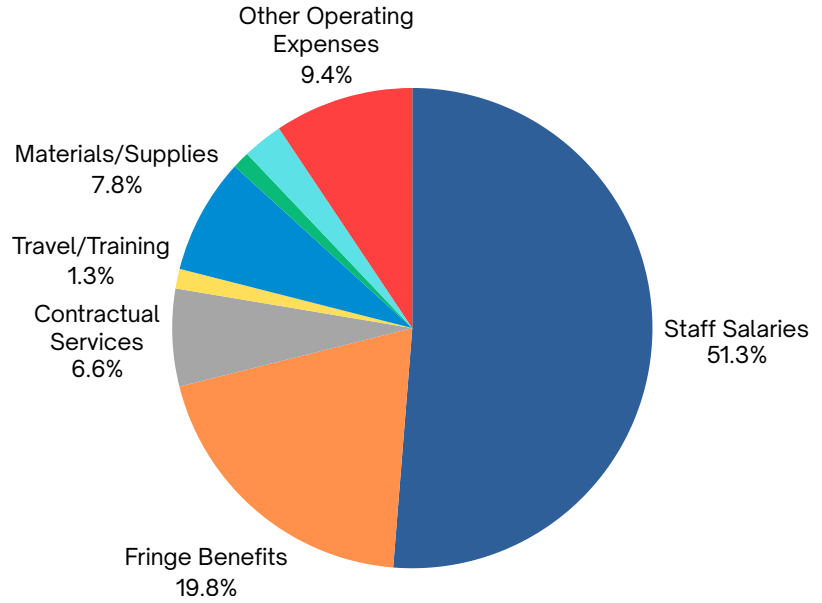


Financial Summary 2025

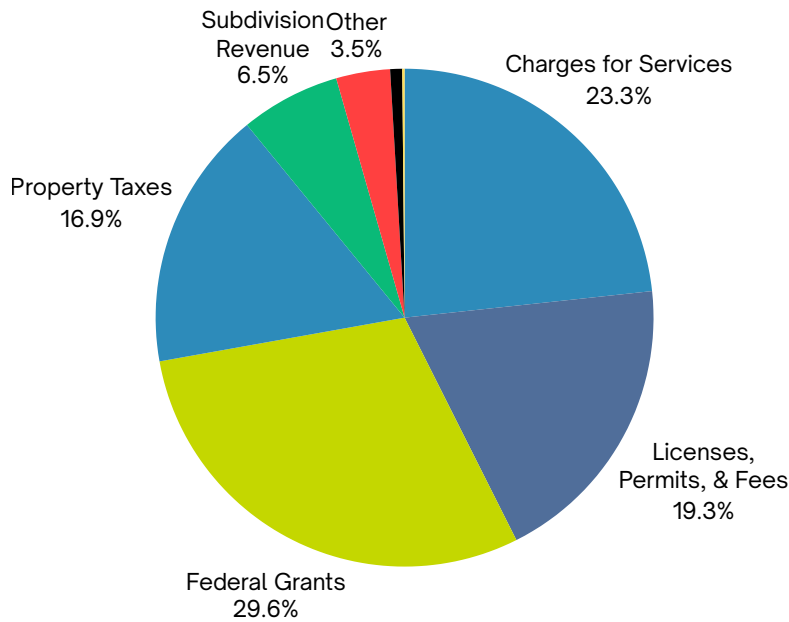
2025 Expenses

Staff Salaries	\$1,406,400.47
Fringe Benefits	\$543,506.13
Contractual Services	\$180,027.46
Travel/Training	\$36,351.47
Materials/Supplies	\$213,505.39
Equipment	\$32,016.50
State Remittance Fees	\$74,302.38
Other Operating Expenses	\$257,060.98
TOTAL EXPENSES	\$2,961,170.75

2025 Expenses



2025 Revenue



2025 Revenue

Property Taxes	\$521,551.00
Subdivision Revenue	\$200,000.00
Charges for Services	\$718,947.22
Licenses, Permits, and Fees	\$595,150.00
Federal Grants	\$913,475.88
Other	\$108,108.77
Local Funding	\$23,982.18
Miscellaneous	\$4,600.97
TOTAL REVENUE	\$3,303,817.52

Harm Reduction

As outlined in our Strategic Plan, the Shelby County Health Department (SSCHD) continues to advance harm reduction strategies to prevent the spread of infectious diseases, reduce overdose deaths, and improve overall community health—benefiting all Shelby County residents.

In October 2025, SSCHD expanded harm reduction access by launching a 24/7 vending machine at the health department and installing Barney Boxes in partnership with five community organizations. These efforts increase accessibility, reduce barriers, and bring resources directly into trusted community settings. From October through December 31, 2025, 770 harm reduction items were distributed to Shelby County residents, demonstrating strong community need and engagement. SSCHD will continue expanding services, strengthening partnerships, and increasing outreach efforts to further support the health and safety of the community.



Medical Reserve Corps (MRC)

The MRC is a national network of volunteers, organized locally to improve the health and safety of their communities.

In 2025, the Sidney-Shelby County Health Department (SSCHD) received a \$10,000 Operational Readiness Award to strengthen the emergency preparedness capability of our unit. These funds are being used to offer Stop the Bleed classes to our community and providing tourniquet kits at no cost to class participants.

SSCHD also offers quarterly CPR training to the public to strengthen community emergency preparedness. CPR trainings are offered free to MRC members.

For more information on CPR, Stop the Bleed classes, or to register as an MRC volunteer, please visit our website at www.shelbycountyhealthdept.org.



Vital Statistics

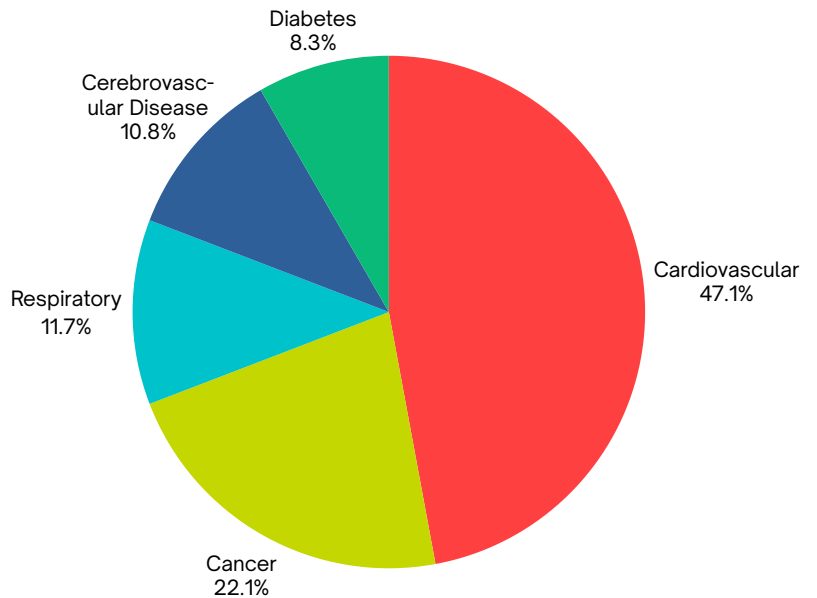
Birth and death records in Ohio date back to December 1908 and are maintained by local health departments using a statewide database. These records are issued on secure paper and can be obtained for legal purposes, such as social security numbers, driver's licenses, insurance claims, and changes to social security benefits. They are also valuable for genealogy research and epidemiological studies. Certificates can be requested in person, by mail, online, or by phone with credit card payment.



Births

Births Recorded in Shelby County	701
Hospital	680
Out of Institution	21
Males	363
Females	338
Sets of Twins	5
Oldest Mother	44
Youngest Mother	16
Birth Certificates Issued	2648

2025 Top Five Leading Causes of Death in Shelby County



Deaths

Deaths Recorded in Shelby County	290
Males	155
Females	135
Death Certificates Issued	1542
Burial Permits Issued	468

Public Health Nursing

Public health nursing strives to preserve the health of populations by focusing on health promotion and disease prevention and protection. The programs and services offered help improve the health of our community by linking people to services and education.



Public Health Nursing By the Numbers



Help Me Grow Case Load	25
Home Visits	392
Average Children on CMH	245
Communicable Diseases reported and investigated	311
Total Mantoux TB Tests Administered & Read	202
Childhood Immunizations Given	1378
Adult Immunizations Given	1069
International Travel/Adult	120
Car Seats Distributed	132
Bike Helmets Distributed	550
Cribs Distributed	82
WIC Average Monthly Participant Rate	460

2024 Top 5 Reportable Communicable Diseases

- COVID-19 110
- Chlamydia 95
- Influenza 48
- Hospitalizations
- Gonorrhea 13
- HEP C 8



Immunizations are available by appointments and evening clinics are held every 1st and 3rd Wednesday of the month from 4:00 PM to 6:00 PM. International travel consultation and vaccinations are available by appointment.

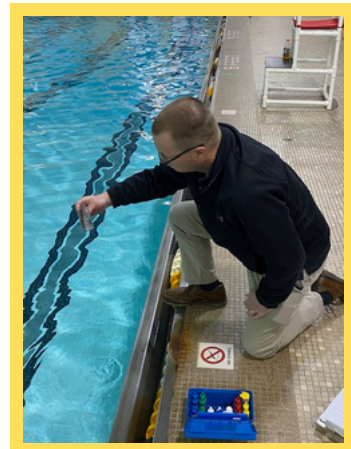


Environmental Health

Public Health Environmental By the Numbers

Number Inspections Consultations

Subdivision Survey/Lots	25	25	92
Household Sewage Disposal	32	69	78
Aeration/Operational Permits	1308	849	257
HSTS Service Contractors Registered	10	n/a	117
Sewage System Installers Registered	25	n/a	171
Septage Haulers	13	5	14
Nuisance/Housing Complaints	37	40	377
Animal Bites-Dogs/Cats	85	n/a	n/a
Animal Bites- Other (wild)	5	n/a	n/a
Animals Tested for Rabies	4	n/a	n/a
Animals Tested Positive	0	n/a	n/a
Food Service/Retail Food Establishments	298	605	342
Vending Locations	12	12	7
Temporary Food	91	91	27
Mobile Food	24	29	75
Facility Reviews	17	17	50
Body Art/Tattoo and Body Piercing Establishments	10	10	3
Manufactured Home Parks	11	17	2
RV Park Camps	7	14	14
Temporary Camps	12	12	11
Resident Camp	1	1	1
New Well Permits	40	58	319
Alteration Permits	9	9	27
Water Samples Tested	106	54	233
Sealing Permits	9	9	25
Schools and Correctional Facilities	21	44	24
Plumbing Contractors Registered	109	n/a	n/a
Residential/Commercial Permits Issued	236	n/a	n/a
Solid & Infectious Waste Facilities	14	14	21
Compost Facilities	3	3	10
Public Swimming Pools/Spas	21	49	29
Smoking Complaints	5	5	2



The Environmental Health (EH) Division works to improve and protect public health in Shelby County with many programs. The EH Division inspects food operations, household sewage treatment systems, nuisance/housing complaints, private water systems, body art establishments, schools, correctional facilities, campgrounds, manufactured home parks, solid waste facilities, and other EH related sites. The EH Division also administers several other programs that directly impact community health like rabies, mosquito control, plumbing, and the smoke-free workplace program.



Public Health
Prevent. Promote. Protect.

**Sidney-Shelby County
Health Department**